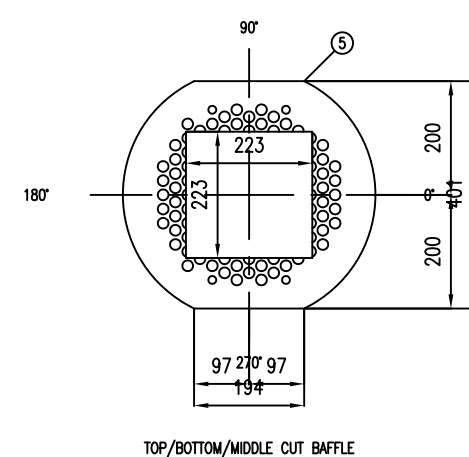
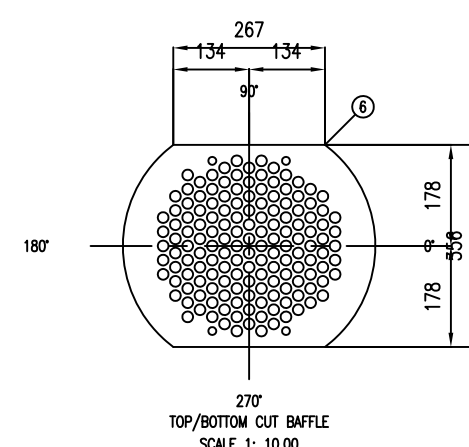


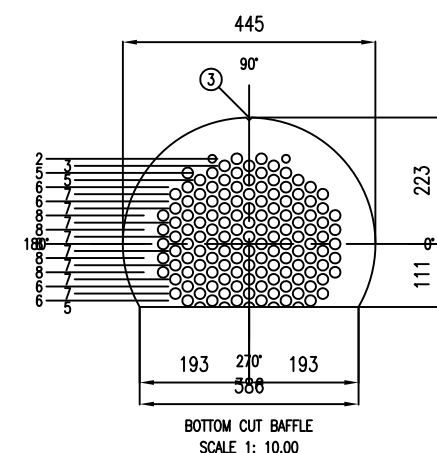
ELEVATION
SCALE 1: 10.00



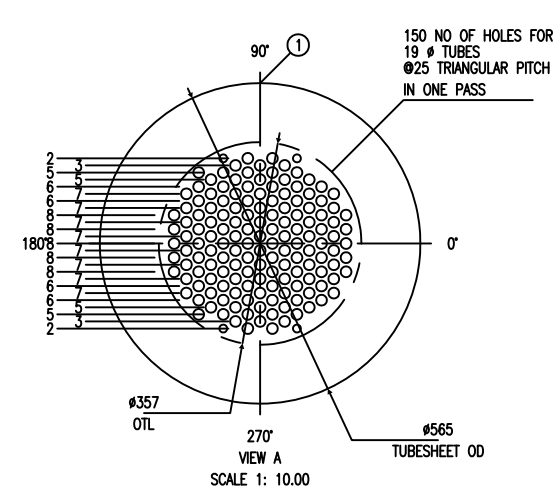
TOP/BOTTOM/MIDDLE CUT BAFFLE
SCALE 1: 10.00



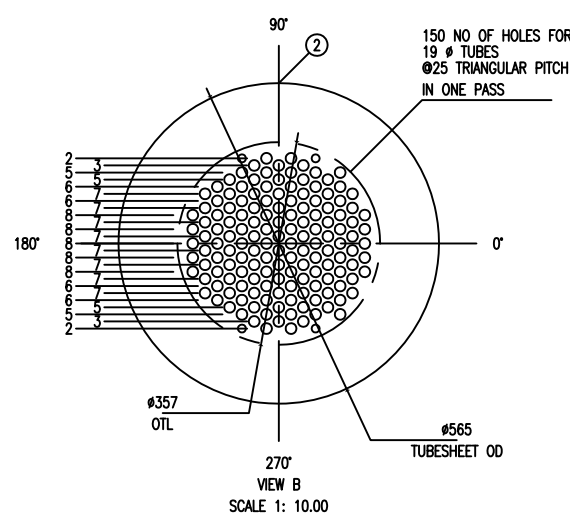
TOP/BOTTOM CUT BAFFLE
SCALE 1: 10.00



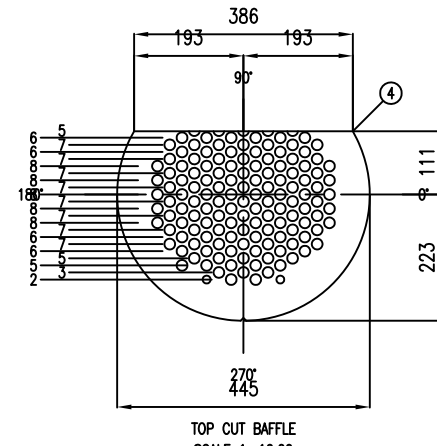
BOTTOM CUT BAFFLE
SCALE 1: 10.00



SCALE 1: 10.00

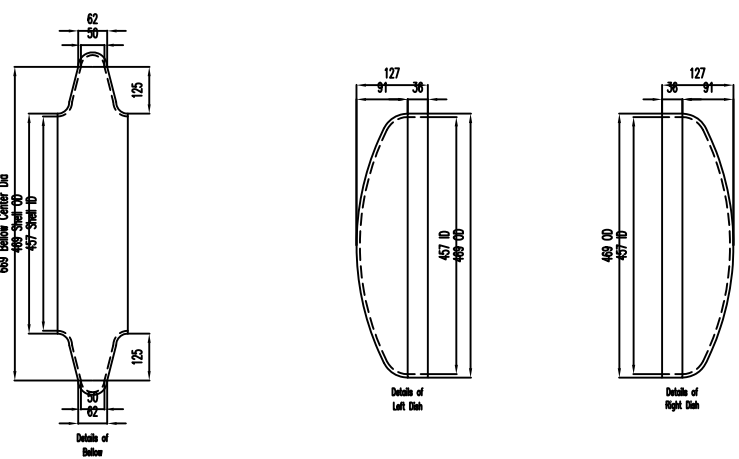


VIEW B
SCALE 1: 10.00



TOP CUT BAFFLE
SCALE 1: 10.00

[illegible]



Flanges Data		Fixed Head
1. Flange Type		
2. PCO of Flange	359	
3. PCO of Flange	296	
4. Type of Left Flange		Slip On
5. Number of Bolt Holes	20	
6. Diameter of bolt holes	31	
7. Length of Stud Bolts	158	
8. Diameter of stud bolts	28	
9. Type of Right Flange		Slip On
Shell Data		
1. Main Shell CO	469	
2. Main Shell Thickness	5	
3. Cap in Baffle ID & Shell ID	50	
4. Right Channel CO	469	
5. Right Channel Thickness	6	
6. Length of Right Channel	600	
7. Left Channel CO	469	
8. Left Channel Thickness	6	
9. Length of Left Channel	600	
Baffle Data		
1. Total Number of Baffles	12	
2. Gap of End Baffles	440	
3. CO of Baffles	445	
Top up Baffle Data		
1. Number of Baffles	5	
2. Baffle Size % of Diameter	75.00	
3. Thickness of Baffles	6	
Bottom out Baffle Data		
1. Number of Baffles	5	
2. Baffle Size % of Diameter	75.00	
3. Thickness of Baffles	6	
Top / Bottom Center Baffle Data		
1. Number of Baffle	1	
2. % Top cut	10.00	
3. % Bottom Cut	10.00	
4. Thickness of Baffles	6	
Top / Bottom / Center cut Baffle Data		
1. Number of Baffle	1	
2. % Top cut	5.00	
3. % Bottom Cut	5.00	
4. Horizontal % of Middle portion Vacant	50.00	
5. Vertical % of Middle portion Vacant	50.00	
6. Thickness of Baffles	6	
Tie Rods Data		
1. Number of Tie Rods	4	
2. Diameter of Tie Rods	14	
3. Length of Tie Rods	4095	

[illegible][illegible]

Wk	No	Qty	NOZZLE		FLANGE				RF PUMP		WELD DET		SHEET 1	
			SERVICE	SIZE	SCH	TYPE	CLASS	FACE	OD	THK	LENGTH	A		B
N1	1		SHELL INLET	150	80	ASME B16.5	300	WNF5	250	6	150	W2	6	THIS DRAWING IS THE PROPERTY OF H&B CONSULTANT
N2	1		SHELL OUTLET	150	80	ASME B16.5	300	WNF5	250	6	150	W2	6	
N3	1		CHANNEL INLET	150	80	ASME B16.5	300	WNF5	250	6	150	W2	6	
N4	1		CHANNEL OUTLET	150	80	ASME B16.5	300	WNF5	250	6	150	W2	6	
N5	1		SHELL WELD + BF	40	100	ASME B16.5	300	WNF5	140	6	150	W2	6	TAQ: NO. 1
N6	1		SHELL DOWN + BF	40	100	ASME B16.5	300	WNF5	250	6	150	W2	6	HE-123